

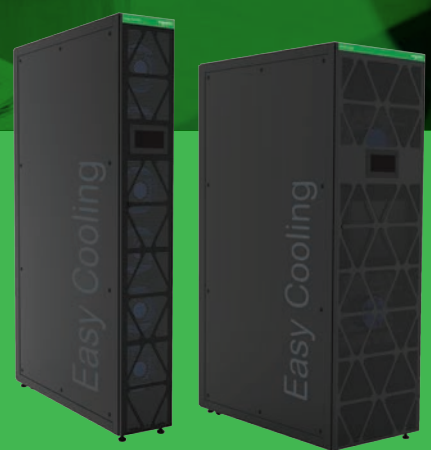


Your easy choice
for cooling

Easy Series

Easy Cooling Row

Chilled water



se.com/cooling

Life Is On

Schneider
Electric

Easy to configure, install, use, and maintain

The Easy Cooling Row series closely couples the cooling with the heat source, improving efficiency and modularity. Easy Cooling Row is easy to configure, install, use, and maintain. By delivering competitive product features and high performance, it is the easy choice for small IT spaces, medium and large Data Centers.

Easy to choose and adapt

- Two standard frame sizes to meet diversified customer scenarios
- Configurable feature sets to satisfy customer needs
- Proven performance with broad capacity range to cover most of your cooling demand
- Variable speed fans with Electronically Commutated motors to reduce energy consumption during off-peak hours and easily adapt to changing power densities
- Humidifier and reheat option for specific customer scenario
- Adapt to both new and existing data center environment
- Height adapter to fit higher enclosures

Easy to install

- Roller caster as standard feature to enable rolling into position quickly
- Top/bottom connection for piping and cabling
- Compatible frame design to match different rack enclosures
- Single and dual power input option

Easy to use and maintain

- 7 inch multi-language LCD touch screen with user friendly interface
- Fan module replacement with operating unit to reduce the total down time
- Slide E-box design to facilitate easy maintenance and service
- Intelligent microprocessor with Modbus RTU and TCP connectivity to enable connectivity with BMS and Schneider Electric EcoStruxure™
- Easy to replace and washable air filters
- Parallel up to 20 units



Standard features

- Variable speed fans with EC motors
- Two-way valve with modulating actuator to regulate the water flow
- Slide E-box design to facilitate easy maintenance and service
- Roller caster as standard feature for easy movement and installation
- Intelligent microprocessor with Modbus RTU and TCP connectivity to communicate with BMS and EcoStruxure™
- 7 inch multi-language LCD touch screen with user friendly interface
- Compatible top/bottom connection for piping and cabling
- Easy to replace and washable/cleanable air filters
- Parallel up to 20 units

Optional features

- Power A and B Dual Feed
- Condensate pump
- Humidifier and reheat option for all frame sizes
- Spot and cable water detector
- Height adaptor for specific height demand

Typical applications

- Medium to large Data Center
- Enterprise regional edge
- Colocation & Cloud
- Finance
- Government
- Telecommunications & Networking

Technical specification

	ERC301	ERC601
Total cooling capacity (kW) ¹	28.2	58
Sensible cooling capacity (kW) ¹	28.2	58
Total cooling capacity (kW) ²	24	49
Sensible cooling capacity (kW) ²	24	49
Power Input	208-230V~1Ph~50/60Hz	380-416V~3Ph~50/60Hz
Total power consumptions (single cooling)	1.02	2
Total power consumptions (with humidifier & reheat)	4.5	9.53
Air Flow (m ³ /h)	5000	11000
Fan Quantities	6	2
Water valve type	2-way	2-way
Water in/out Piping Size	DN25/DN25	DN32/DN32
Drain Piping Size (ID)	DN19	DN19
Cable Connection Location	Bottom & Top	Bottom & Top
User interface	7" LCD touch screen	7" LCD touch screen
Humidification option (kg/h)	1.5	3
Reheat option (kW)	3	6
FLA/A (single cooling)	11	6
FLA/A (with humidifier & reheat)	30	19
Units Height (mm)	1991	1991
Units Width (mm)	300	600
Units Depth (mm)	1070	1070
Color	RAL9004	RAL9004

¹ Indoor 37°C/24%RH, water inlet/outlet 10–15°C

² Indoor 37°C/24%RH, water inlet/outlet 12–18°C

³ For 301 and 601 units, the performance data is presented according to 50Hz, please consult us if you have any requirement about 60Hz.

Remark: The above cooling capacity is all referring to net cooling capacity.

Life Is On



se.com/cooling

Schneider Electric Industries SAS
35, rue Joseph Monier - CS 30323
F92506 Rueil-Malmaison Cedex

© 2019 Schneider Electric. All Rights Reserved. Life Is On | Schneider Electric is a trademark and the property of Schneider Electric SE, its subsidiaries and affiliated companies.
998-20628903_GMA_B